

[Subscribe](#)[Past Issues](#)[Translate ▼](#)[Subscribe](#) | [Previous Bulletin](#)[View this email in your browser](#)

USDA Southwest Climate Hub Bulletin

Resilient working landscapes

News, research and events for the Southwest Climate Hub region

August 2017

News

New Mexico Climate Champions workshop

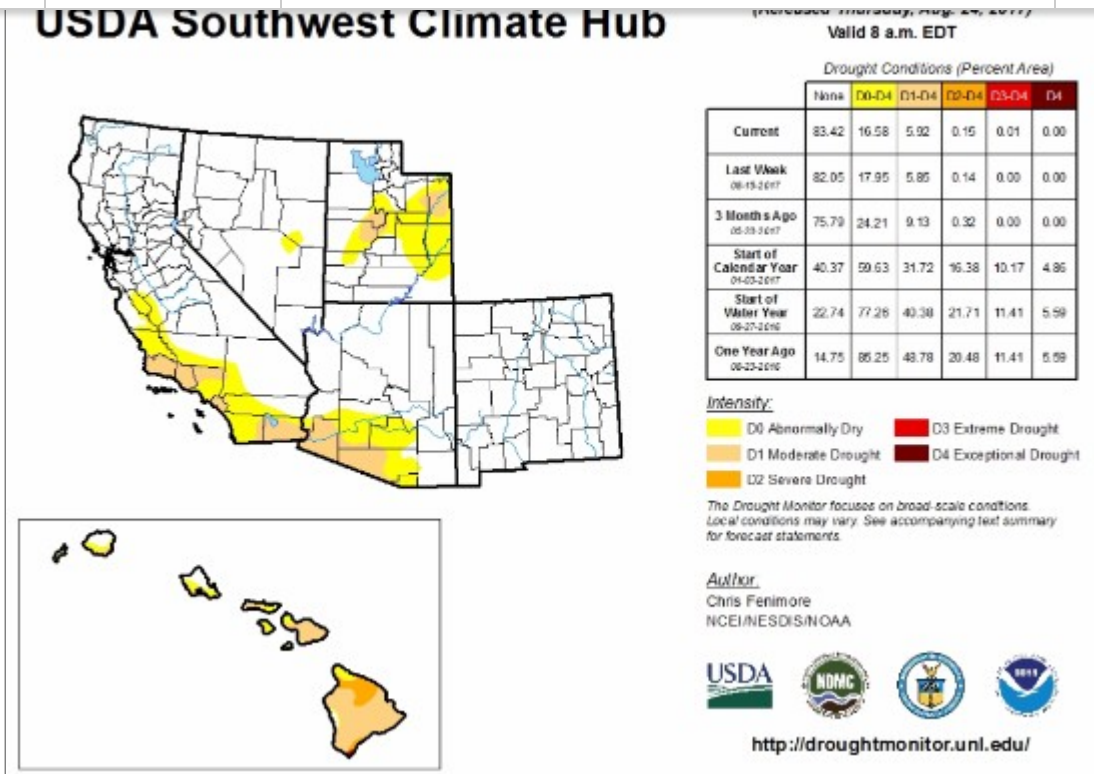
The [two-day workshop hosted by Asombro Institute for Science Education](#), covered climate change and water / energy issues. Each teacher received a supply kit to implement the activity lessons with their students.

Current Drought Conditions

Subscribe

Past Issues

Translate ▾



A weekly map of drought conditions is available at the U.S.Drought Monitor [website](http://droughtmonitor.unl.edu/).

Excerpt from the National Drought Summary for August 22, 2017

"Most of the West region received little to no precipitation for this period, as this time of year is normally the dry season. Temperatures were cooler than average for much of the Southwest and interior West, but 2-4 degrees F above normal for much of Nevada, as much as 2 degrees F above normal for central California and 6-8 degrees F above normal for northern California. Wildfires have resulted in poor air quality. The Lolo Peak fire has scorched 32,000 acres thus far."

"In Hawaii, the lack of precipitation during the past month has resulted in drought coverage over much of the islands. On Kauai, it was reported that low elevation pastures from Kealia on the east side clockwise around the island to Hanapepe are very dry. Similar to Kauai, west Oahu has been very dry with deteriorating pastures and vegetation. On the Big Island, conditions continue to worsen over the southern portion. It was reported that several ranchers operating along the lower elevations of the Kau District from Punaluu to South Point had pastures in very poor condition. The 45-day rainfall total from that area was close to 10 percent of average."

[Subscribe](#)[Past Issues](#)[Translate ▼](#)

[producing biodiesel from algae fed on “papaya smoothies”!](#) This innovative zero waste system also produces algal meal as a by-product – a low-cost source of feed for fish or livestock.



What's the buzz?

[Researchers at University of California, Riverside](#), are examining how climate change, poor nutrition, and pesticides contribute in the decline of bees.

Santa Cruz farmer renovates pasture with the aid from Extension service

New Mexico State University Extension Service provided information on forage varieties, weed and pest management to help [Santa Cruz farmer](#) improve forage quality and yield.

Climate change might help pests

[Pest may developing resistance to Bt corn](#) in a warmer climate. The warmer temperature may stress the plants more and weaken their defense.



Farm management using university research

A [third-generation farmer](#) makes management decisions using agricultural Extension information.

Research

[Agricultural stakeholder views on climate change](#)

Researchers at Cornell University reviewed literature on agricultural stakeholder views and decision-making on climate change. Most U.S. farmers believe the climate is changing, but

[Subscribe](#)[Past Issues](#)[Translate ▼](#)

their decision-making with respect to climate mitigation and adaptation activities.

(WIREs Climate Change)

[Apps for rangeland inventory and monitoring](#)

The Long Term Ecological Research (LTER) team at New Mexico State University and Jornada Experimental Range talk about the Land-Potential Knowledge System (LandPKS) tool in this paper. LandPKS is a suite of open-source mobile phone apps for collecting and sharing local and scientific data and information, and for using this information to support decision-making.

(Rangelands)

[Concerns for agricultural production](#)

A new study from Arizona State University researchers predicts that future warming could decrease crop yields in Arizona by up to 12.2% for each 1 °C rise in temperature. Irrigation would need to increase by 2.6% per 1 °C.

(Environmental Research Letters)

[Community supported agriculture factsheets](#)

Extension colleagues at Utah State University have produced a series of 7 factsheets on community supported agriculture (CSA). These fact sheets are focused on Utah but contain helpful information and reference sources for starting a CSA operation wherever you are.

- [CSA: Crop Planning](#)
- [CSA: Definition, Benefits, Barriers, and Resources for Growers](#)
- [CSA: Legal Concerns](#)
- [CSA: Marketing & Outreach Strategies to Encourage Membership](#)
- [CSA: Participating in a Share](#)
- [CSA: Pricing](#)
- [CSA: Starting and Managing Your Operation](#)

(All Current Publications)

Funding Opportunity

California Department of Agriculture has recently launched the [Healthy Soils Program](#). The objective is to build soil carbon and reduce agricultural greenhouse gas emissions by providing incentives to farmers and ranchers for the adoption of new management

[Subscribe](#)[Past Issues](#)[Translate ▼](#)

EVENTS

- [Four Corners Adaptation Forum Workshop](#), August 29-30, 2017
- [Upper Rio Grande Adaptation Forum Workshop](#), September 6-7, 2017
- [14th Biennial Conference of Science & Management on the Colorado Plateau & Southwest Region](#), September 11-14, 2017
- Webinar: [The Integrated Pest Information Platform for Extension and Education](#), September 13, 2017
- Webinar: [California-Nevada Drought & Climate Outlook](#), September 25, 2017
- [Food Sovereignty Summit](#), October 2-5, 2017
- [Behavior, Energy and Climate Change Conference](#), October 15-18, 2017
- [California Invasive Plant Council Symposium](#), October 24-27, 2017
- [Cultures Under Water: Climate Impacts on Tribal Cultural Heritage](#), December 6-8, 2017



Copyright © 2017 USDA Southwest Climate Hub, All rights reserved.

Want to change how you receive these emails?
You can [update your preferences](#) or [unsubscribe from this list](#).

