

Find out what's new at The Jornada

[View this email in your browser](#)



Issue 1. Welcome to our new email version of Jornada News. Each issue we highlight a different program at the Jornada along with our latest news and events.

A LOOK AT LTER: THE JORNADA'S LONG TERM ECOLOGICAL RESEARCH PROGRAM

Our research unit based at The Jornada conducts science in support of the management and conservation of rangelands in the US and on other continents. About one-half of the world's land surfaces are classified as rangeland, and our work has had national and global applications. In order to try and have applications you have to work from an understanding of key processes important to land management and its conservation. In arid environments, those processes can often play out slowly and/or infrequently. Therefore, one important aspect of our work is its long-term nature.

► [Watch a Video on Long Term Research on Soil Development](#)

In our region, while it may look like it seldom changes, the Chihuahuan Desert is actually changing in one fashion or another all the time. Some changes are short term. For example, in one year we will have abundant rodent populations, and in a following year these animals may be all but non-existent. Some summers we will have wide spread occurrence of a native desert flower, like the yellow flowered desert marigold, and the next year it will be a white flowered desert zinnia. Other times, the dynamics can be much more long term in nature, like a shift that occurs over decades



YOUR FEEDBACK IS NEEDED...

Vote for the topic of our next Jornada Speaker Series and be entered to win an autographed copy of *The Big Burn* from our 2014 speaker, Tim Egan.

« [CHOOSE](#) »
[A TOPIC NOW](#)

Share ▾

Tra

dynamic, like a prolonged drought followed by a series of higher rainfall years and the resulting impacts of these interwoven dry - wet periods. Some changes in past decades, though, have been a result of mismanagement and resulted in degradation, a phenomenon we term "desertification".

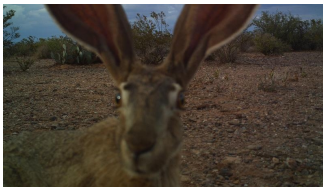
Often these kinds of degradations are irreversible. However, nature is seldom straightforward and simple. One of the real values of long-term research is to be able to establish an understanding of natural, dynamic, inherent changes compared to those that are unintended and caused by human activities. This understanding will help us learn when we should try and intervene and work to impede or slow down a process, and when what we are experiencing is part of an expected variation where intervention may not be effective, useful, feasible, or economical.

The LTER program is accomplishing this with nearly 100 years of recorded data, and current projects strive to identify agents and dynamics of change.

To find out more about environmental changes in our rangeland environments, including new insights, and to learn more about LTER, [click here](#).



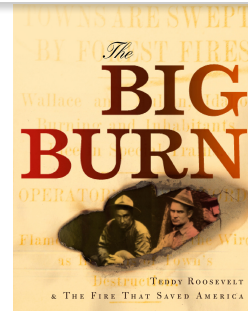
Chihuahuan Desert grasslands after 2014 monsoon season.



Blacktailed Jackrabbit possibly contributing to vegetation changes.

CONTINUE READING

« FEATURED LTER VIDEO »



JORNADA IN THE NEWS

High Country News

Did you know that The Jornada has a herd of 200 criollo cows? Read about it in High Country News' recent article "[The Desert-Friendly Cow](#)."

CONGRATULATIONS!

The USDA recently acknowledged The Jornada at the ARS Annual Recognition Program with these distinctive awards:

Research Leadership and Center Directorship

for exceptional research that effectively developed people, resources, and ideas that impacted the world. This is the first time this award has been given.

Congratulations on the inaugural selection!



Area Senior Research Scientist Award

DR. JEFF E. HERRICK

Recognized for developing

Share ▾

Tr



Tracking Climate Change with Caliche

[Watch The Latest Jornada Videos on YouTube](#)

STAY IN TOUCH WITH THE JORNADA.

Connect with us on your favorite social network and get access to photos, videos, and the latest rangeland research.



conditions that are applied to millions of acres of rangelands on four continents.

Federal Laboratory Consortium Award for Technology Transfer **DR. JASON KARL & COLLEAGUES**

Recognized for notable technology development for JournalMap, a scientific literature search engine that empowers you to find relevant research based on location.

Location/Administrative Staff Award

MRS. LIZ KNOLL

For her dedication, work ethic and value to our research location.



[Find Out What's Happening with the SW Climate Hub](#)

Copyright © 2014 The Jornada, All rights reserved.

[unsubscribe from this list](#) [update subscription preferences](#)

